

Save on specialty costs by guiding patients to higher-quality care with provider engagement.

- Reduce costs with proven, personalized specialty referral and site of service provider communication
- Incentivize physicians to adopt higher-value behaviors and referrals
- Drive effective participation and build trust with practice engagement
- See impact in real time with dashboards to track projected and actual returns



Dr. Erin Carey,
great job this month!

\$6.8k

YTD INCENTIVES
EARNED

\$2.7k

YTD LEFT ON THE
TABLE

\$14.5k

YTD PATIENT
SAVINGS

\$5.4k

YTD PATIENT
SAVINGS LEFT ON
TABLE

So far this year, most of your procedures were performed at
Clarify-preferred facilities!

What is Clarify Advance?

Make it easy for your in-network physicians to select your preferred, high-value care options with evidence-based strategies proven to drive behavior change. Augment your team with flexible options including provider communications, incentive design and payment, and expert-led, practice-level support. Even benefit from no-downside risk using our full end-to-end program, including our Performance IQ Suite analytics to maximize your results.

Proven Engagement & Success

6x

Savings for payer in
multi-year program in
multiple markets

15%

Greater use of high-
value sites by
orthopedic surgeons

18%

Improvement in
high-value referrals
by PCPs to preferred
specialists

100%

Of participants re-
enroll after year
one due to ease of
participation and
success

Provider engagement and incentives that save on care and build trust.

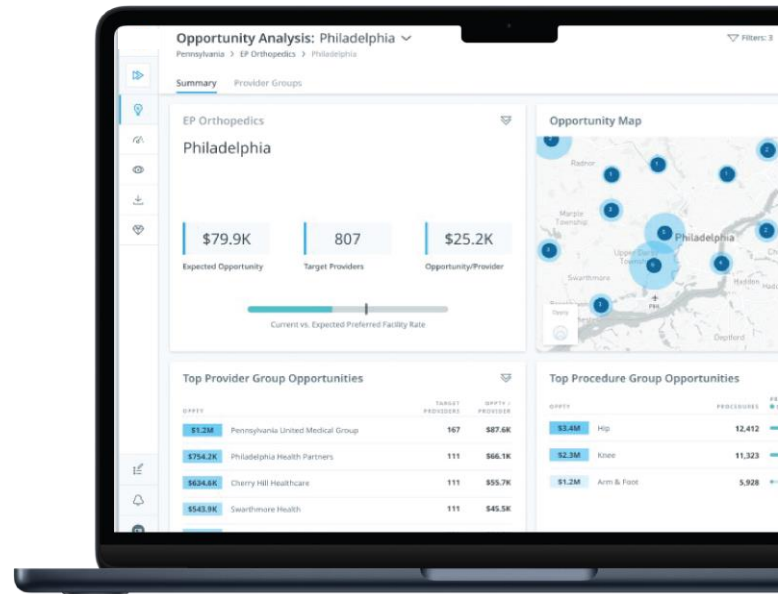
What physicians are saying...

“The more we see the numbers, the more helpful it is to change our patterns, especially for patients who are not as financially stable.”

DENVER PARTICIPANT

“Because of [this program], we are now more conscious of patient out-of-pocket expenses.”

ATLANTA PARTICIPANT



Why Clarify?

- Drive savings by guiding specialty care referrals and site of care selection
- Achieve results quickly with initiatives tailored to your populations and provider practices
- Engage providers and build trust with support, including one-on-one coaching, benefits-based insights, and quarterly savings payments
- Reduce the burden on internal resources with outsourced, end-to-end program management from recruiting to coaching to payment
- Access flexible options to augment your teams and initiatives, or access the full program

About Clarify

Clarify unlocks the hidden value in healthcare data. Trusted by providers, payers, tech and services, and life sciences companies, Clarify uses the power of data and AI-powered predictive analytics to make complex decisions easier. The Clarify Atlas Platform® is the foundation, leveraging the industry's largest and most robust dataset to map more than 300 million lives and 20 billion data points to surface actionable insights with unparalleled speed and precision.